

Rockwell
Automation
CENTERLINE 2100
MOTOR CONTROL CENTER

PROJECT: INCONTROL – YPFB
MCC: TERMINAL SANTA CRUZ REV 3

REV	APPROVED	DATE	STAGE	PROJECT: INCONTROL – YPFB TERMINAL SANTA CRUZ REV 3	<div>RockwellAutomation</div>	CONFIDENTIAL AND PROPRIETARY INFORMATION. THIS DOCUMENT CONTAINS CONFIDENTIAL AND PROPRIETARY INFORMATION OF ROCKWELL AUTOMATION, INC. AND MAY NOT BE USED, COPIED OR DISCLOSED TO OTHERS EXCEPT WITH THE AUTHORIZED WRITTEN PERMISSION OF ROCKWELL AUTOMATION INC.		
A	C. SERNA	06-05-19	APPROVAL					
				CUSTOMER: INCONTROL S.R.L // NIT:196352027 0000518645 0000000000035	ONE LINE COVER SHEET	SHEET 1 OF 16		
				ORDER-LINE NUMBER: 6504356403-000100		SIZE D	10004714120	VER 00
PROJ. DOC. TYPE: COVER SHEET				LANG: ENG	DRAWN BY: C. SERNA		DATE: 29-MAY-19	

MOTOR CONTROL CENTER STRUCTURE SPECIFICATIONS

ENCLOSURE OPTIONS REQUESTED

BOTTOM PLATES
VERTICAL WIREWAY TIE-BARS

SPACE HEATER VOLTAGE: 240V
SPACE HEATER THERMOSTAT: 1 PER BLOCK

EXPORT PACKAGING REQUIRED

ArcSHIELD, ARC RESISTANT MCC
 DEVICE LIMITED NOTE:
 THIS MCC PROVIDES TYPE 2 ACCESSIBILITY PER IEEE C37.20.7
 WHEN AVAILABLE SHORT CIRCUIT CURRENT $\leq 65\text{kA}$ AND
 PROTECTED BY ONE OF THE FOLLOWING DEVICES:
UL LISTED FUSES
 CLASS L –ANY FUSE $\leq 1200\text{ A}$
 CLASS R –ANY FUSE $\leq 600\text{ A}$
 CLASS J –ANY FUSE $\leq 600\text{ A}$
UL LISTED MOLDED CASE CIRCUIT BREAKERS
 ALLEN–BRADLEY –BULLETIN 140G, FRAME G, H, J, K, M, or N

MOTOR CONTROL CENTER COMMON UNIT OPTIONS

ACRYLIC STYLE UNIT NAMEPLATES
BLACK LETTERS ON WHITE UNIT NAMEPLATE COLOR
4 - LINES OF INFORMATION PER UNIT NAMEPLATE

01, 02, 03, 04, 05, 06, 07, 08, 09, 10, 11, 12,
13

IP ADDRESSES NOT PROVIDED ON NAMEPLATES
EXTERNAL OVERLOAD RESET BUTTONS
UNIT DIAGRAM LOCATION: CENTRAL

NONE REQUESTED

PULLBOX REQUIRED ON CABINET(S)

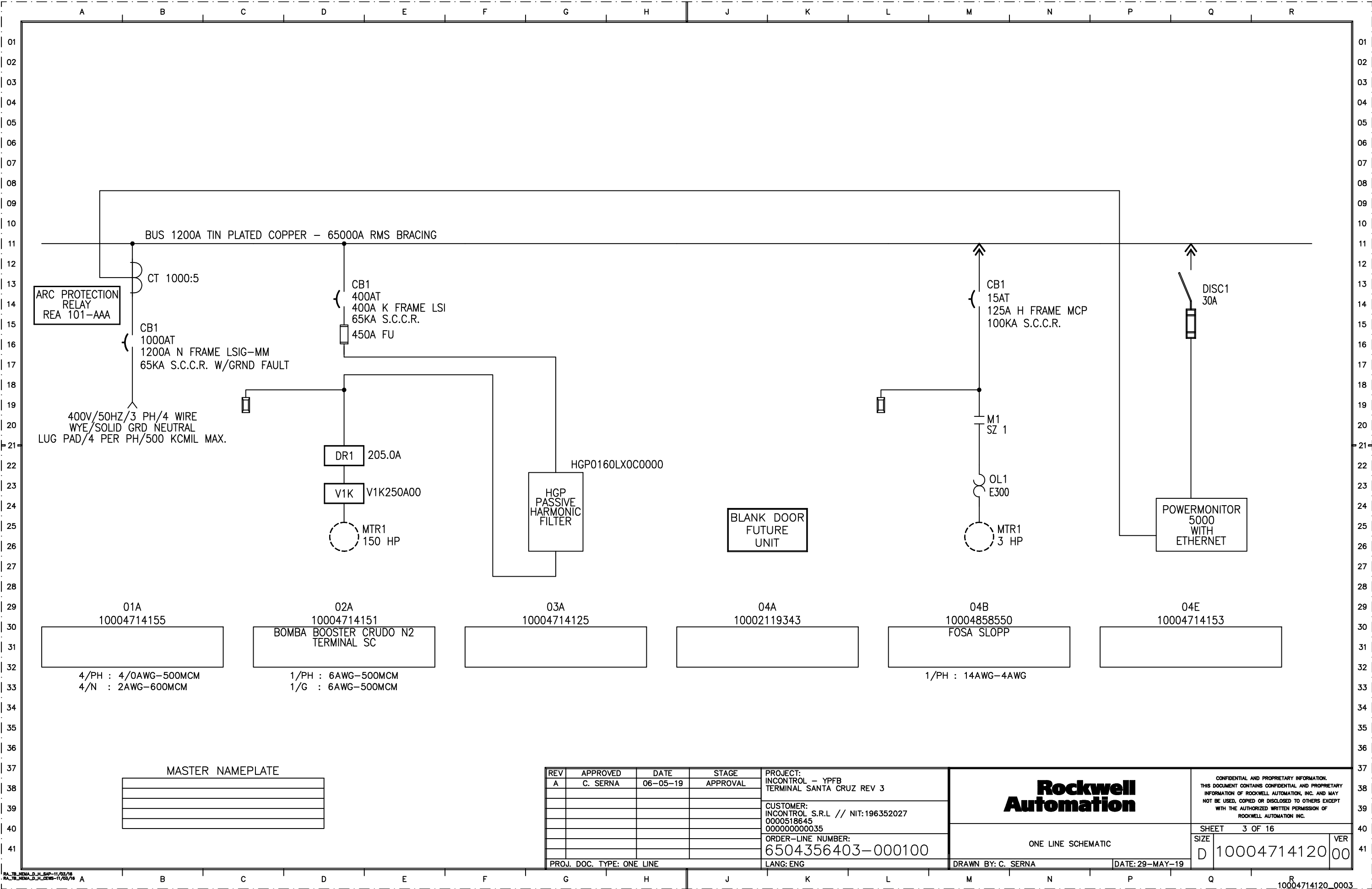
NONE REQUESTED

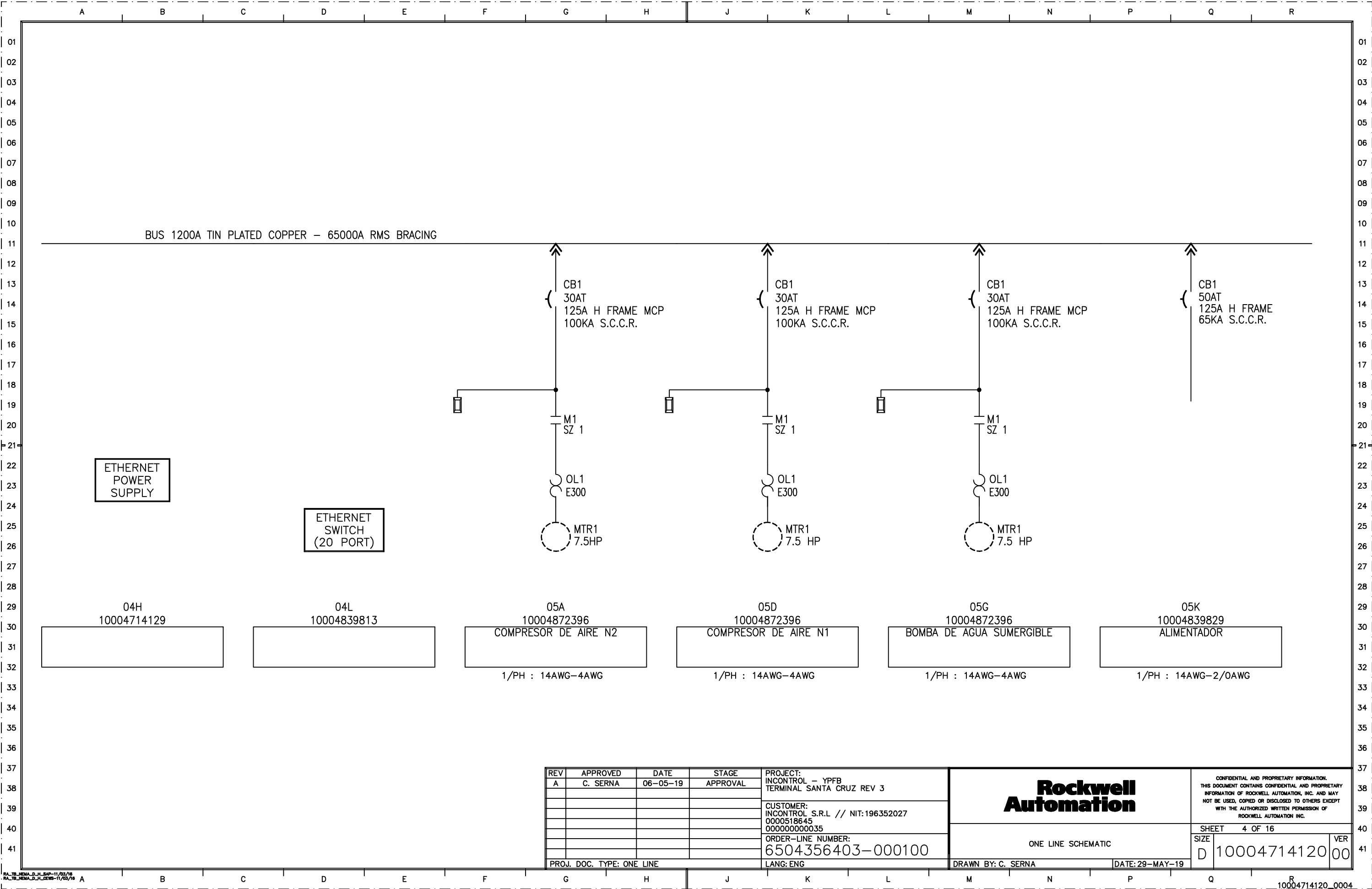
NETWORK INFORMATION

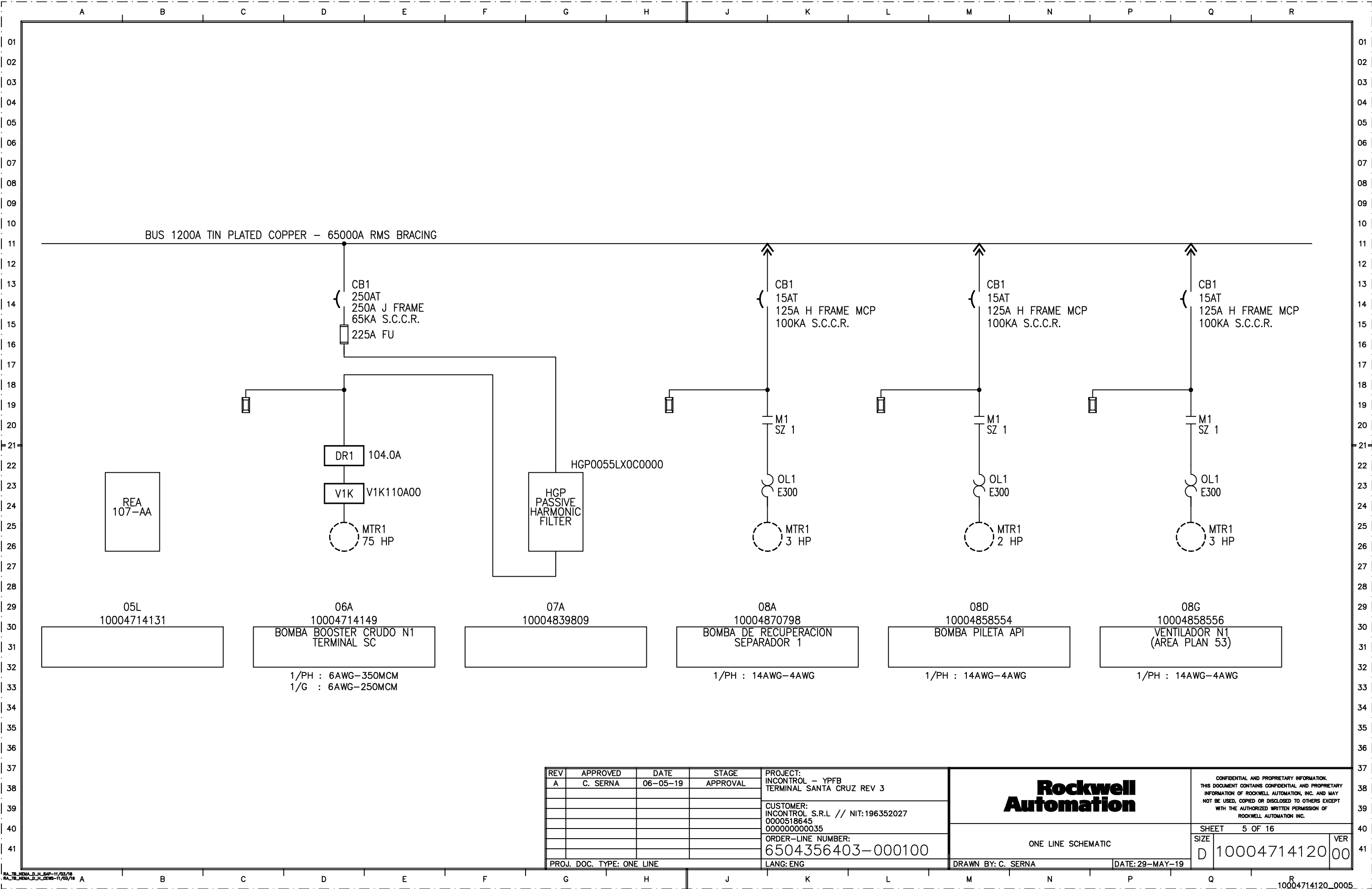
NETWORK TYPE: ETHERNET/IP

REV	APPROVED	DATE	STAGE	PROJECT:
A	C. SERNA	06-05-19	APPROVAL	INCONTROL - YPFB TERMINAL SANTA CRUZ REV 3
				CUSTOMER:
				INCONTROL S.R.L // NIT:196352027
				0000518645
				000000000035
				ORDER-LINE NUMBER:
				6504356403-000100
PROJ. DOC. TYPE: SPECIFICATIONS SHEET				LANG: ENG

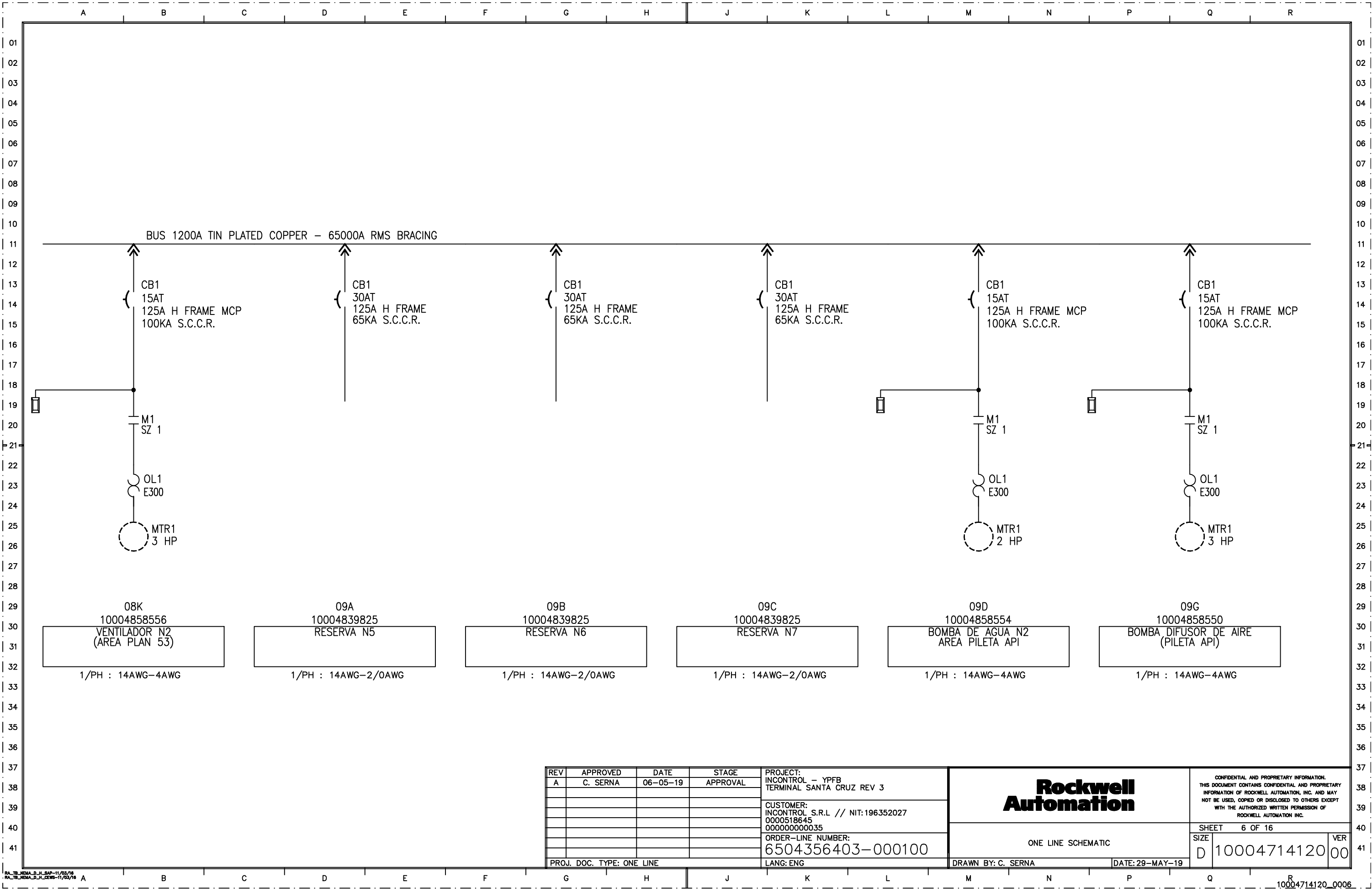
<h1 style="text-align: center;">Rockwell Automation</h1>		CONFIDENTIAL AND PROPRIETARY INFORMATION. THIS DOCUMENT CONTAINS CONFIDENTIAL AND PROPRIETARY INFORMATION OF ROCKWELL AUTOMATION, INC. AND MAY NOT BE USED, COPIED OR DISCLOSED TO OTHERS EXCEPT WITH THE AUTHORIZED WRITTEN PERMISSION OF ROCKWELL AUTOMATION INC.	
		SHEET 2 OF 16	
SPECIFICATIONS SHEET		SIZE	VER
		D 10004714120	00
DRAWN BY: C. SERNA		DATE: 29-MAY-19	



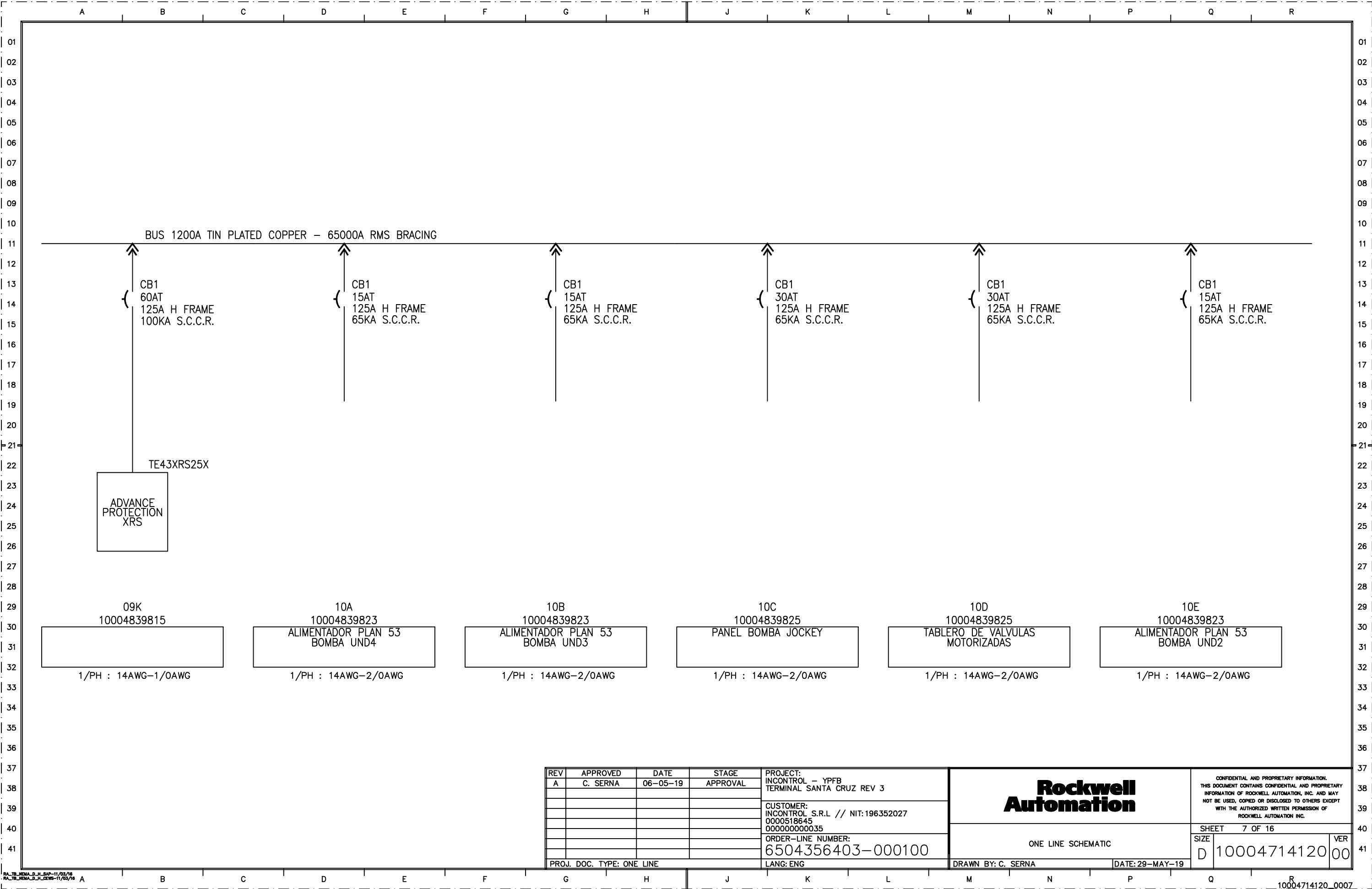


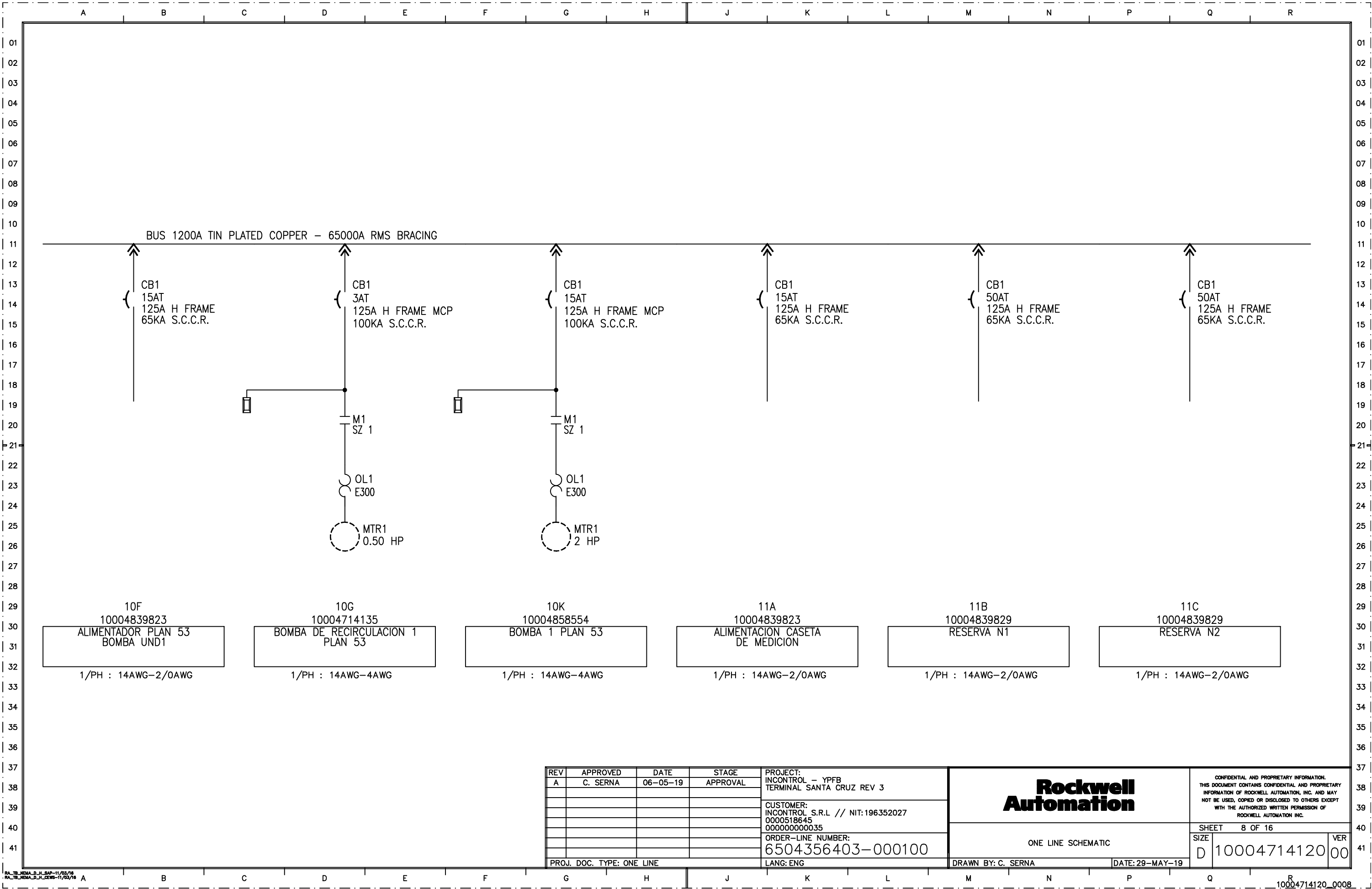


REV	APPROVED	DATE	STAGE	PROJECT:	<div>Rockwell Automation</div>		CONFIDENTIAL AND PROPRIETARY INFORMATION. THIS DOCUMENT CONTAINS CONFIDENTIAL AND PROPRIETARY INFORMATION OF ROCKWELL AUTOMATION, INC. AND MAY NOT BE USED, COPIED OR DISCLOSED TO OTHERS EXCEPT WITH THE AUTHORIZED WRITTEN PERMISSION OF ROCKWELL AUTOMATION INC.			
A	C. SERNA	06-05-19	APPROVAL	INCONTROL – YPFB TERMINAL SANTA CRUZ REV 3						
				CUSTOMER: INCONTROL S.R.L // NIT:196352027 0000518645 000000000035						
				ORDER-LINE NUMBER: 6504356403-000100						
				LANG: ENG						
PROJ. DOC. TYPE: ONE LINE					DRAWN BY: C. SERNA		DATE: 29-MAY-19		SHEET 5 OF 16	
					ONE LINE SCHEMATIC		SIZE	10004714120		VER
							D	00		00

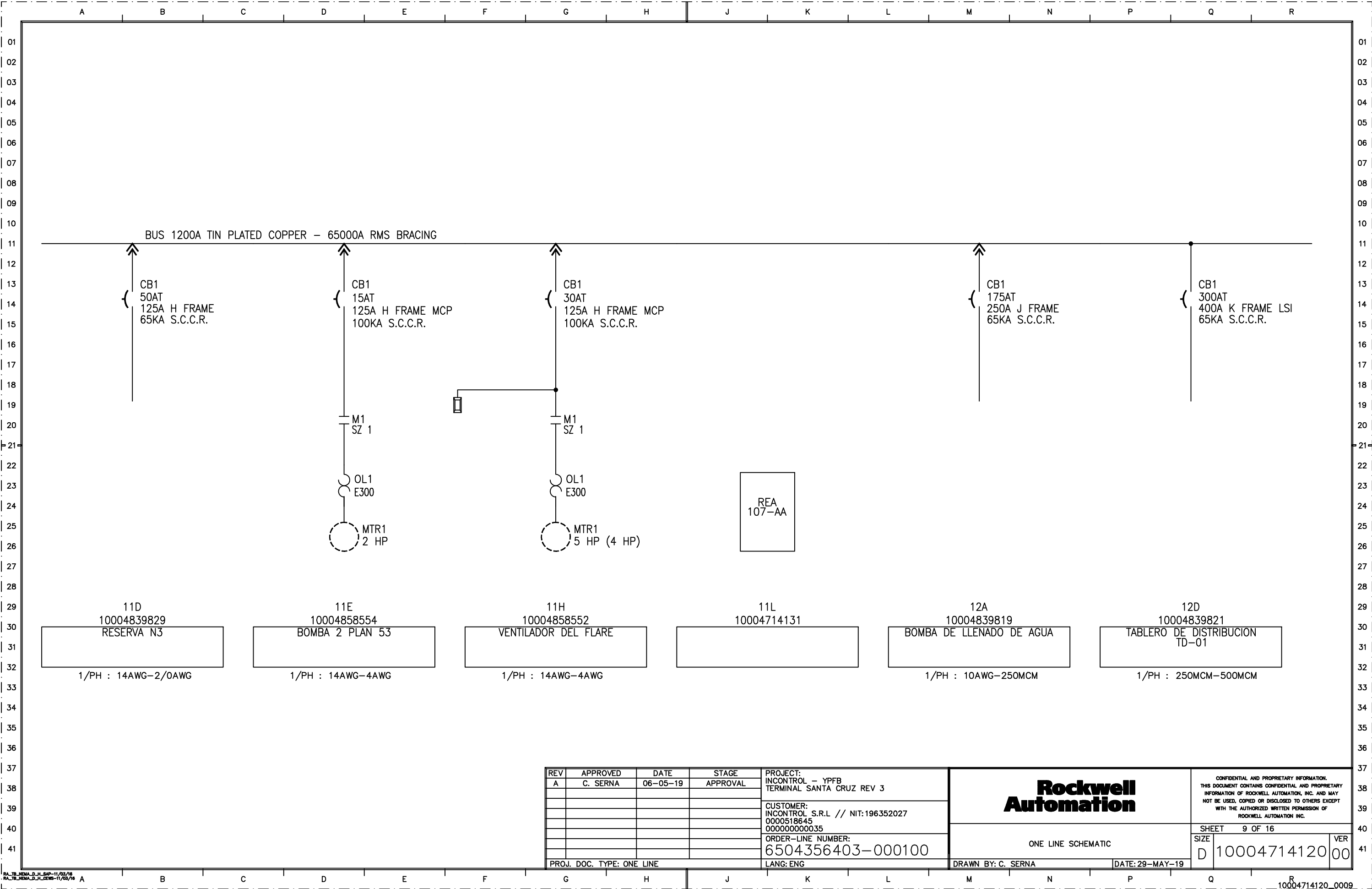


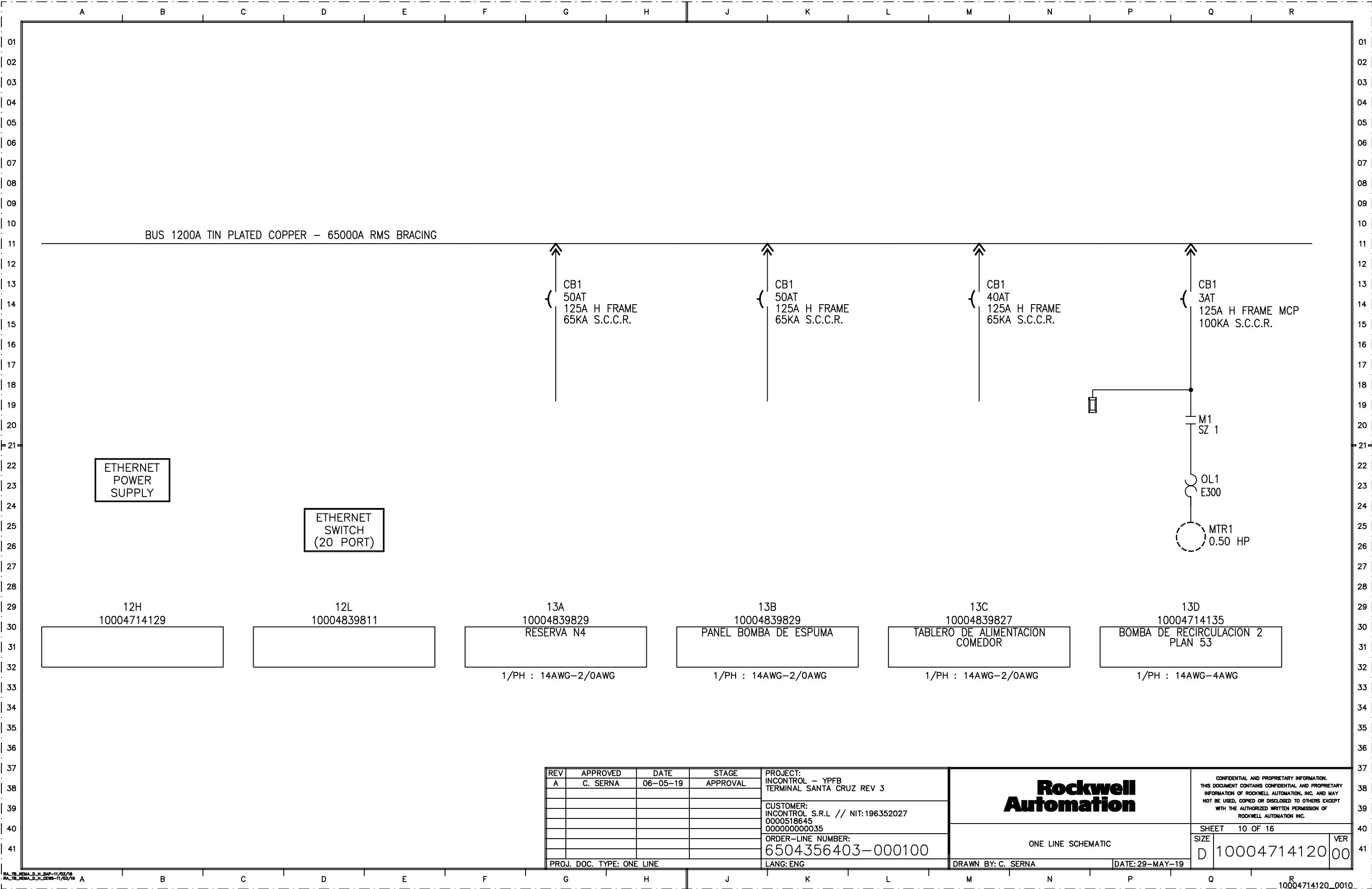
REV	APPROVED	DATE	STAGE	PROJECT:	<div>Rockwell Automation</div>	CONFIDENTIAL AND PROPRIETARY INFORMATION. THIS DOCUMENT CONTAINS CONFIDENTIAL AND PROPRIETARY INFORMATION OF ROCKWELL AUTOMATION, INC. AND MAY NOT BE USED, COPIED OR DISCLOSED TO OTHERS EXCEPT WITH THE AUTHORIZED WRITTEN PERMISSION OF ROCKWELL AUTOMATION INC.	
A	C. SERNA	06-05-19	APPROVAL	INCONTROL - YPFB TERMINAL SANTA CRUZ REV 3			
				CUSTOMER: INCONTROL S.R.L // NIT:196352027 0000518645 000000000035			
				ORDER-LINE NUMBER: 6504356403-000100	ONE LINE SCHEMATIC	SHEET	6 OF 16
				PROJ. DOC. TYPE: ONE LINE		SIZE	D 10004714120
				LANG: ENG	DRAWN BY: C. SERNA	DATE: 29-MAY-19	VER

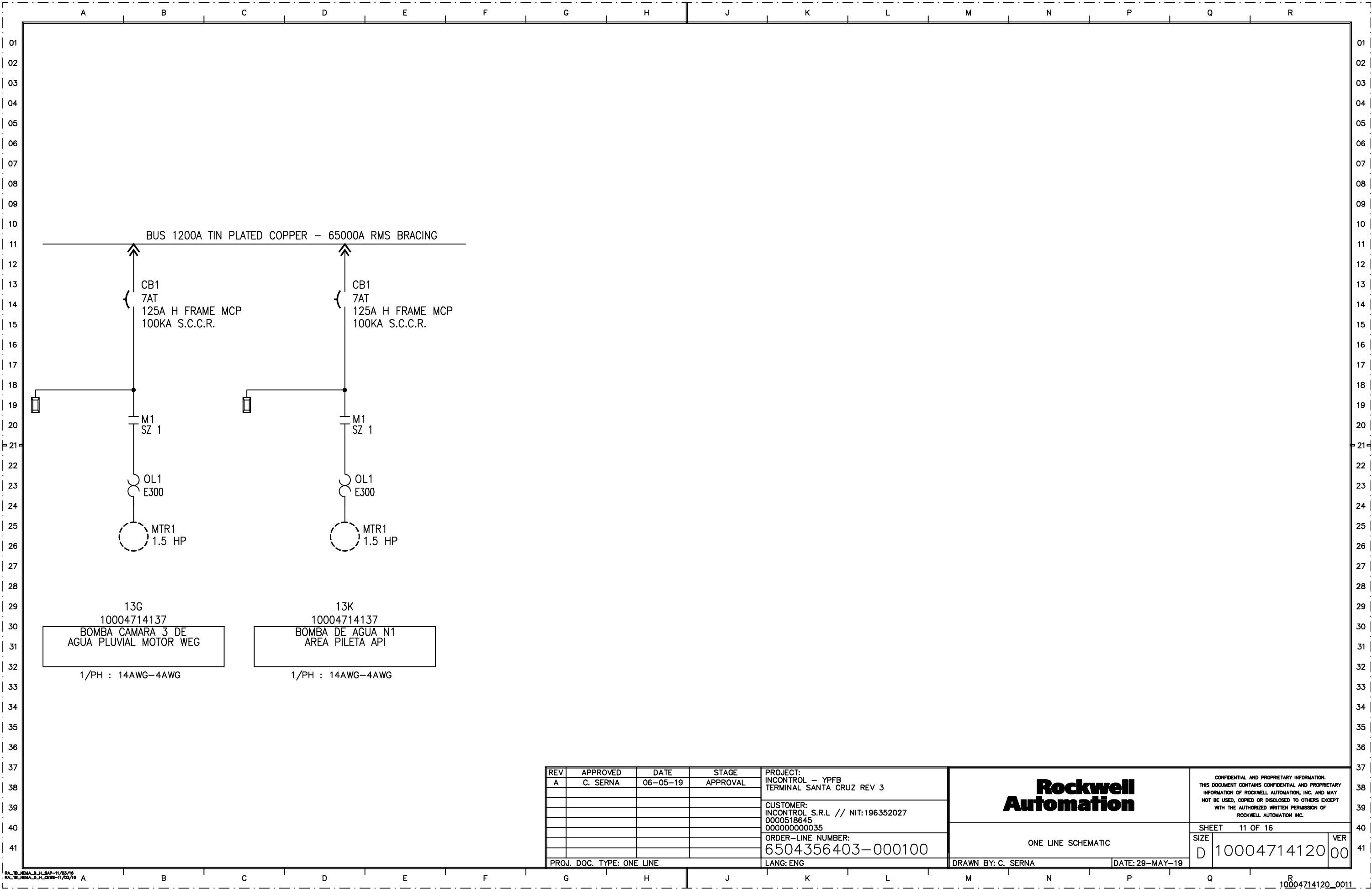




REV	APPROVED	DATE	STAGE	PROJECT:	<div>Rockwell Automation</div>		CONFIDENTIAL AND PROPRIETARY INFORMATION. THIS DOCUMENT CONTAINS CONFIDENTIAL AND PROPRIETARY INFORMATION OF ROCKWELL AUTOMATION, INC. AND MAY NOT BE USED, COPIED OR DISCLOSED TO OTHERS EXCEPT WITH THE AUTHORIZED WRITTEN PERMISSION OF ROCKWELL AUTOMATION INC.	
A	C. SERNA	06-05-19	APPROVAL	INCONTROL - YPFB TERMINAL SANTA CRUZ REV 3				
				CUSTOMER: INCONTROL S.R.L // NIT:196352027 0000518645 000000000035	ONE LINE SCHEMATIC		SHEET 8 OF 16	
				ORDER-LINE NUMBER: 6504356403-000100			SIZE D	10004714120
PROJ. DOC. TYPE: ONE LINE				LANG: ENG	DRAWN BY: C. SERNA		DATE: 29-MAY-19	VER 00

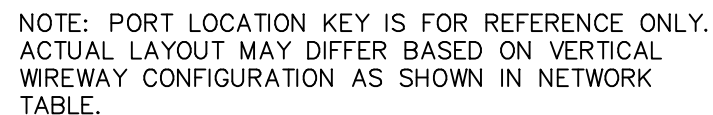






REV	APPROVED	DATE	STAGE	PROJECT:	<div>Rockwell Automation</div>		CONFIDENTIAL AND PROPRIETARY INFORMATION. THIS DOCUMENT CONTAINS CONFIDENTIAL AND PROPRIETARY INFORMATION OF ROCKWELL AUTOMATION, INC. AND MAY NOT BE USED, COPIED OR DISCLOSED TO OTHERS EXCEPT WITH THE AUTHORIZED WRITTEN PERMISSION OF ROCKWELL AUTOMATION INC.	
A	C. SERNA	06-05-19	APPROVAL	INCONTROL - YPFB TERMINAL SANTA CRUZ REV 3				
				CUSTOMER: INCONTROL S.R.L // NIT:196352027 0000518645 000000000035	ONE LINE SCHEMATIC		SHEET 11 OF 16	
				ORDER-LINE NUMBER: 6504356403-000100			SIZE D	10004714120
PROJ. DOC. TYPE: ONE LINE				LANG: ENG	DRAWN BY: C. SERNA		DATE: 29-MAY-19	VER 00

71" MCC	90" MCC	71" MCC
25.5" BUS HEIGHT		45" BUS HEIGHT



The diagram illustrates the format for two types of cable labels: "Switch to Device Cable Label" and "Switch to Switch Cable Label".

Switch to Device Cable Label: This label format consists of seven components separated by hyphens. Each component is represented by a box with a description and an example below it:

- Location within the lineup of the Ethernet Switch Unit for a given switch group:** Example: (SG____)
- Physical location of the switch within the unit (Left or Right) and the port number:** Example: (____)
- Ethernet Cable type (Adapter, Homerun, or Patch) and Adapter Port Letter (A-H):** Example: (E__)
- Location within the lineup of the connected Ethernet enabled unit. - _# for cables without units.** Example: (____)
- Unit port number (for units with more than one enabled device) ## for cables without units.** Example: (____)
- Metric length of the Ethernet cable:** Example: (____.)
- Type of the connector at the unit end of the cable (Straight or Angled):** Example: (-)

Switch to Switch Cable Label: This label format consists of six components separated by hyphens. Each component is represented by a box with a description and an example below it:

- Location within the lineup of the Ethernet Switch Unit for a given switch group:** Example: (SG____)
- Physical location of the switch within the unit (Left or Right) and the port number:** Example: (____)
- Location within the lineup of the Ethernet Switch Unit for a given switch group:** Example: (SG____)
- Physical location of the switch within the unit (Left or Right) and the port number:** Example: (____)
- Metric length of the Ethernet cable:** Example: (____.)
- Type of the connector at the unit end of the cable (Straight or Angled):** Example: (-)

RA_TB_NEMA_D_H_SAP-11/03/16
- RA_TB_NEMA_D_H_CEW-11/03/16

01
02
03
04
05
06
07
08
09
10
11
12
13
14
15
16
17
18
19
20
21
22
23
24
25
26
27
28
29
30
31
32
33
34
35
36
37
38
39
40
41

Ethernet Power Supply								
ENET PS Loc	ENET PS Cat #	2-Branch Redundant Unit Loc (1)	2-Branch Redundant Cat # (1)	Max Amp (A)	Left Branch Sections	Left Branch Total Current (A)	Right Branch Sections	Right Branch Total Current (A)
04H	2100-EPs8KB-30THX-79U-112 A-751HS-768C			8.00	1 - 4	1.34	5 - 11	3.40
12H	2100-EPs8KB-30THX-79U-112 A-751HS-768C			8.00	12	1.00	13	1.02

(1)

Column is left blank when the 2-branch redundant unit is not utilized.

(2)

Customer connection is made to terminal blocks in the corresponding 2-Branch Redundant Unit.

REV	APPROVED	DATE	STAGE	PROJECT:
A	C. SERNA	06-05-19	APPROVAL	INCONTROL - YPFB TERMINAL SANTA CRUZ REV 3
				CUSTOMER: INCONTROL S.R.L // NIT:196352027 0000518645 000000000035
				ORDER-LINE NUMBER: 6504356403-000100
PROJ. DOC. TYPE: POWER SUPPLIES				LANG: ENG

Rockwell
Automation

ETHERNET POWER SUPPLIES

SHEET 13 OF 16

SIZE D 10004714120

VER 00

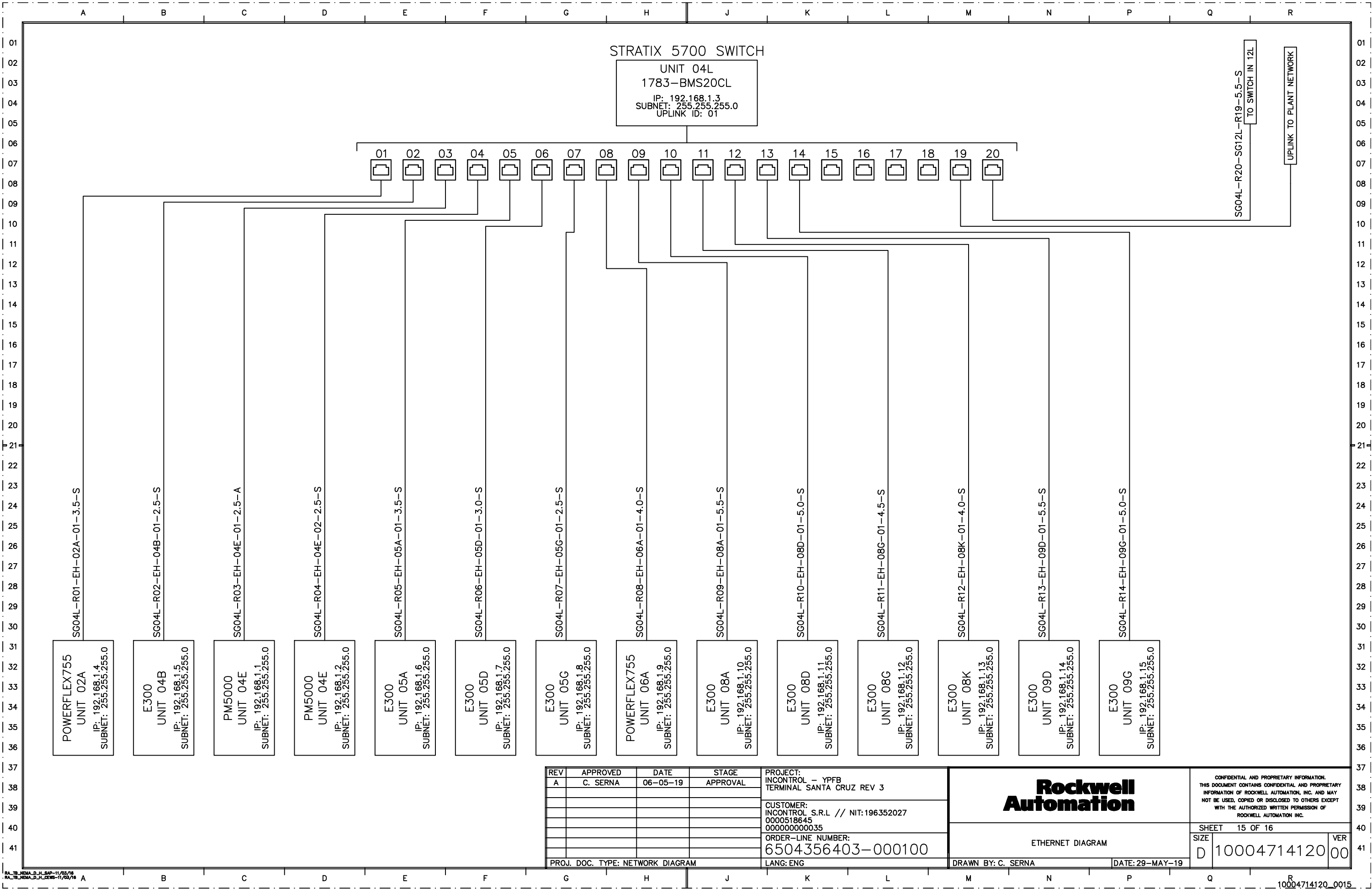
CONFIDENTIAL AND PROPRIETARY INFORMATION.
THIS DOCUMENT CONTAINS CONFIDENTIAL AND PROPRIETARY
INFORMATION OF ROCKWELL AUTOMATION, INC. AND MAY
NOT BE USED, COPIED OR DISCLOSED TO OTHERS EXCEPT
WITH THE AUTHORIZED WRITTEN PERMISSION OF
ROCKWELL AUTOMATION INC.

DRAWN BY: C. SERNA

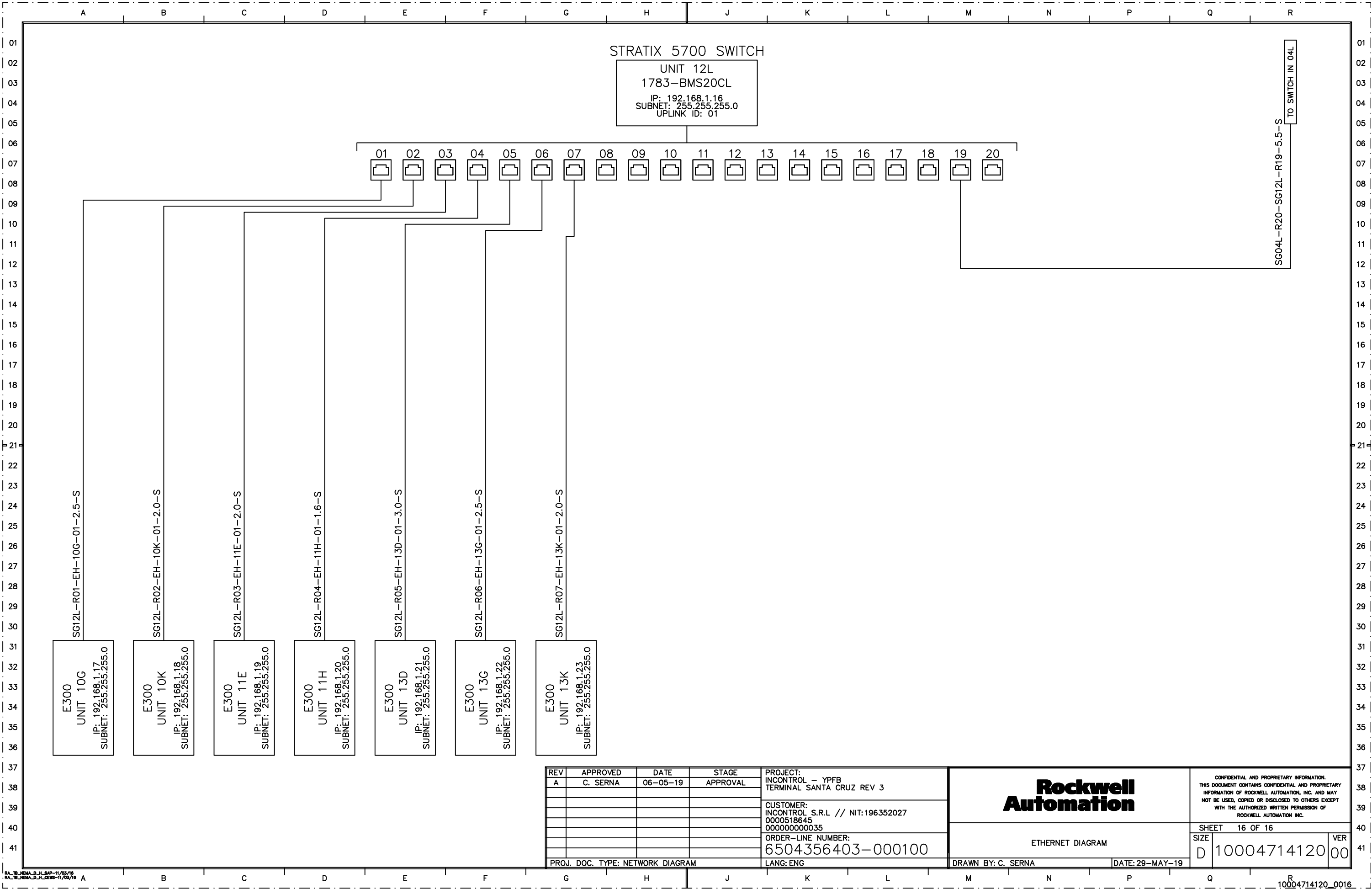
DATE: 29-MAY-19

10004714120_0013

01
02
03
04
05
06
07
08
09
10
11
12
13
14
15
16
17
18
19
20
21
22
23
24
25
26
27
28
29
30
31
32
33
34
35
36
37
38
39
40
41



REV	APPROVED	DATE	STAGE	PROJECT: INCONTROL - YPFB TERMINAL SANTA CRUZ REV 3	<div>Rockwell Automation</div>	CONFIDENTIAL AND PROPRIETARY INFORMATION. THIS DOCUMENT CONTAINS CONFIDENTIAL AND PROPRIETARY INFORMATION OF ROCKWELL AUTOMATION, INC. AND MAY NOT BE USED, COPIED OR DISCLOSED TO OTHERS EXCEPT WITH THE AUTHORIZED WRITTEN PERMISSION OF ROCKWELL AUTOMATION INC.	
A	C. SERNA	06-05-19	APPROVAL				
				CUSTOMER: INCONTROL S.R.L // NIT:196352027 0000518645 0000000000035	ETHERNET DIAGRAM	SHEET 15 OF 16	
				ORDER-LINE NUMBER: 6504356403-000100		SIZE D	VER 00
PROJ. DOC. TYPE: NETWORK DIAGRAM				LANG: ENG	DRAWN BY: C. SERNA		
					DATE: 29-MAY-19		



REV	APPROVED	DATE	STAGE
A	C. SERNA	06-05-19	APPROVAL
PROJ. DOC. TYPE: NETWORK DIAGRAM			

PROJECT: INCONTROL - YPFB TERMINAL SANTA CRUZ REV 3
CUSTOMER: INCONTROL S.R.L // NIT:196352027 0000518645 0000000000035
ORDER-LINE NUMBER: 6504356403-000100
LANG: ENG

Rockwell Automation

ETHERNET DIAGRAM

CONFIDENTIAL AND PROPRIETARY INFORMATION.
THIS DOCUMENT CONTAINS CONFIDENTIAL AND PROPRIETARY
INFORMATION OF ROCKWELL AUTOMATION, INC. AND MAY
NOT BE USED, COPIED OR DISCLOSED TO OTHERS EXCEPT
WITH THE AUTHORIZED WRITTEN PERMISSION OF
ROCKWELL AUTOMATION INC.

SHEET 16 OF 16

SIZE D 10004714120 VER 00